





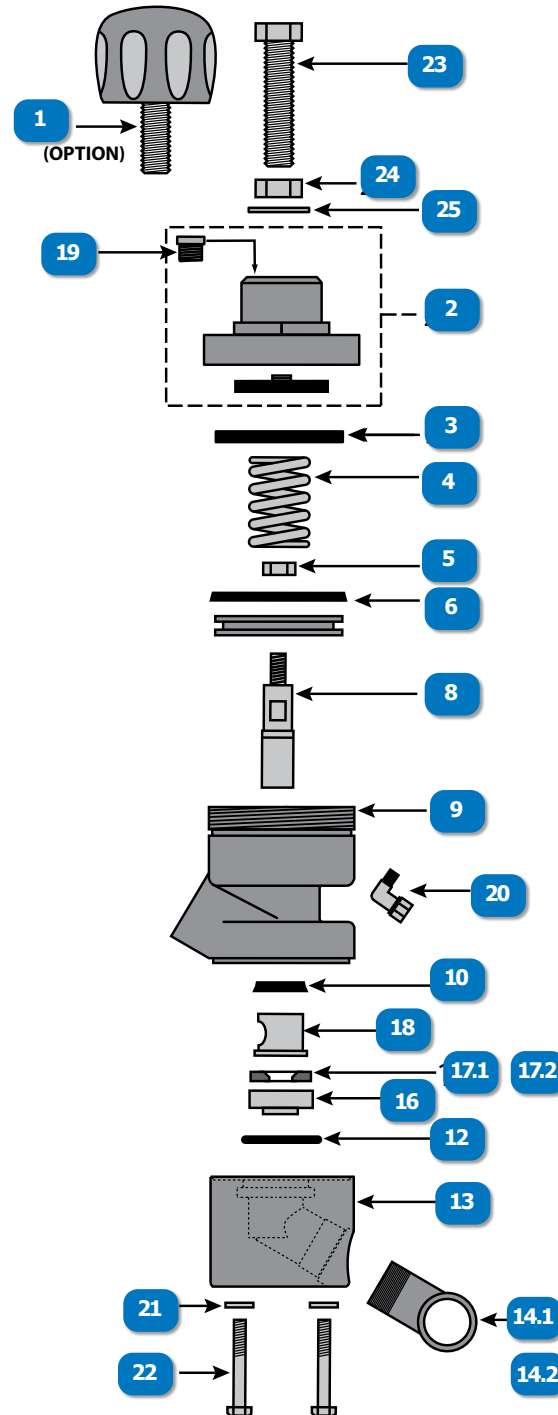


# APV STRAIGHT-DOWN (Pg. 1 of 2)

#	DESCRIPTION	PART #
	APV STRAIGHT-DOWN METERING VALVE W/ TUNGSTEN CARBIDE SLEEVE	888-2151-000PB
	APV STRAIGHT-DOWN, REPAIR KIT W/TC SLEEVE, INCLUDES # 6, 8, 10, 12, 16, 17 & 18	888-2151-00099PB
	APV STRAIGHT-DOWN, SEAL KIT, SEALS ONLY W/ URETHANE SEAT, INCLUDES # 6, 10, 12 & 17	888-2151-00098PB
	APV, SHOT-PEENER-30#, STRAIGHT-DOWN METERING VALVE W/TUNGSTEN CARBIDE SLEEVE & SEAT	888-2151-020PB
	APV, SHOT-PEENER-30#, REPAIR KIT W/TC SLEEVE & SEAT, INCLUDES # 6, 8, 10, 12, 16, 17 & 18	888-2151-02099PB
	APV, SHOT-PEENER-30#, SEAL KIT, SEALS ONLY, INCLUDES # 6, 10, & 12	888-2151-02098PB
	APV WRENCH, FITS APV/APVII CAPS & HANDWAY NUT	MP01035
<b>1</b>	APV, KNOB	888-2149-00001PB
<b>2</b>	APV & APV II, CAP ASSEMBLY	888-2148-00002PB
<b>3</b>	APV & APV II, BUMP RING	888-2149-00019PB
<b>4</b>	APV & APV II, SPRING	888-2149-00003PB
<b>5</b>	APV & TV2, NUT	888-2149-00008PB
<b>6</b>	APV, APV II, & T2V PISTON SEAL (GREEN URETHANE)	888-2148-00004PB
<b>7</b>	APV, PISTON	888-2149-00005PB
<b>8</b>	APV, TUNGSTEN CARBIDE, PLUNGER	888-2149-00007PB
<b>9</b>	APV, CYLINDER	888-2149-00009PB
<b>10</b>	APV, APV II, MPV, MPV II & MPV MINI, PLUNGER SEAL W/ "O"-RING (CLEAR URETHANE)	888-2148-00006PB
<b>11</b>	APV & APV II, O-RING FOR STRAIGHT-DOWN METERING VALVE INSERT	888-2149-00935PB
<b>12</b>	APV & APV II, BASE FOR STRAIGHT-DOWN METERING VALVES	888-2149-40711PB
<b>13</b>	APV & APV II, PIPE NIPPLE, 1" FEMALE x 1-1/2" MALE	888-2149-50616PB



# APV STRAIGHT-DOWN (Pg. 2 of 2)

#	DESCRIPTION	PART #
14.2	APV & APV II, PIPE NIPPLE, 1-1/4" MALE x 1-1/4"	888-2149-50716PB
14.1	APV & APV II, PIPE NIPPLE, 1-1/2" MALE x 1-1/2" MALE	888-2149-50816PB
16	APV, INSERT	888-2149-00014PB
17.1	APV & APV II, URETHANE SEAT (HEAVY DUTY BLUE)	888-2149-00010PB
17.2	APV, SHOT-PEENER-30#, TUNGSTEN CARBIDE SEAT, (AVAILABLE IN REPAIR KIT ONLY)	888-2149-40710PB
18	APV II / APV, SOLID TUNGSTEN CARBIDE SLEEVE	888-2148-00013PB
19	VENT, 1/8"	888-2014-300PB
20	SWIVEL 90*, 1/8"MNPT X 1/8"F	888-4203-50000PB
21	FLAT WASHER 3/8" SAE (10 PACK)	888-7027-50302PB
22	BOLT, 3/8" UNC x 3-3/4"	888-7010-50714PB
23	HEX BOLT, 5/8" UNC x 3-1/2"	888-7010-51512PB
24	NUT, 5/8" UNC	888-7017-515PB
25	FLAT WASHER, 5/8" UNC	888-7027-55202PB

